



## MOUNT MERU GAME LODGE & SANCTUARY

### *Rack Rates*

Valid from 1<sup>st</sup> January 2012 till 31st December 2012



SEASON	LOW SEASON	HIGH SEASON	PEAK SEASON
DATES	1/4 - 14/6	3/1 - 31/3 15/6 - 23/12	1/1 - 2/1 24/12 - 31/12
<b>SINGLE ROOM</b>			
Bed & Breakfast	US \$124	US \$188	US \$222
Half Board	US \$145	US \$209	US \$243
Full Board	US \$162	US \$226	US \$260
Day Room	US \$65	US \$87	US \$109
<b>DOUBLE ROOM</b>			
Bed & Breakfast	US \$ 96	US \$132	US \$151
Half Board	US \$117	US \$153	US \$172
Full Board	US \$134	US \$170	US \$189
Day Room	US \$43	US \$58	US \$70
<b>TRIPLE ROOM</b>			
Bed & Breakfast	US \$84	US \$124	US \$144
Half Board	US \$105	US \$145	US \$165
Full Board	US \$122	US \$162	US \$182
Day Room	US \$37	US \$51	US \$56

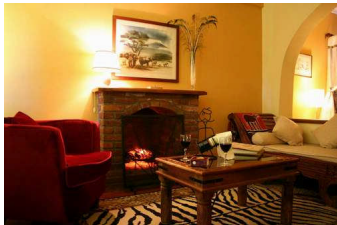
**N.B. ALL RATES QUOTED ON A PER PERSON PER DAY BASIS.**

*The essence of the Safari experience...*



# 'Mt. Kilimanjaro' & 'Mt. Meru' Suites

Valid from 1<sup>st</sup> January 2011 till 31st December 2011



SEASON	LOW SEASON	HIGH SEASON	PEAK SEASON
DATES	1/4 - 14/6	3/1 - 31/3 15/6 - 23/12	1/1 - 2/1 24/12 - 31/12
<b>SINGLE ROOM</b>			
Bed & Breakfast	US \$179	US \$262	US \$290
Half Board	US \$200	US \$283	US \$311
Full Board	US \$217	US \$300	US \$328
Day Room	US \$87	US \$130	US \$175
<b>DOUBLE ROOM</b>			
Bed & Breakfast	US \$139	US \$182	US \$212
Half Board	US \$160	US \$203	US \$233
Full Board	US \$177	US \$220	US \$250
Day Room	US \$58	US \$82	US \$104
<b>TRIPLE ROOM</b>			
Bed & Breakfast	US \$118	US \$160	US \$180
Half Board	US \$139	US \$181	US \$201
Full Board	US \$156	US \$198	US \$218
Day Room	US \$45	US \$62	US \$82

**N.B. ALL RATES QUOTED ON A PER PERSON PER DAY BASIS.**

## All inclusive Option

An 'all-inclusive' option is offered to guests of the 'Mount Kilimanjaro' and 'Mount Meru' Suites. All beverages (excluding Champagnes and premium Brandies, but including all other beverage items offered on our cocktail, wine and beverage lists), all food (including food items to be found on our snack menu), laundry services and internet services will be offered in exchange for a supplement of US \$40 per person on our Full Board rates as shown above.

*A Special Place to Stay!*

## **TERMS AND CONDITIONS**

### 1. Children:

Rates charged in the event of children sharing a room with an adult will be as follows:

- A) Aged 0 to 2 years – Free of Charge.
- B) Aged 3 to 12 years – 50% of adult rate.
- C) Aged 13 to 17 years – 75% of adult rate.

Children and young adults aged 3 to 17 years will be charged 75% of the adult rate when occupying their own room.

### 2. Transfers:

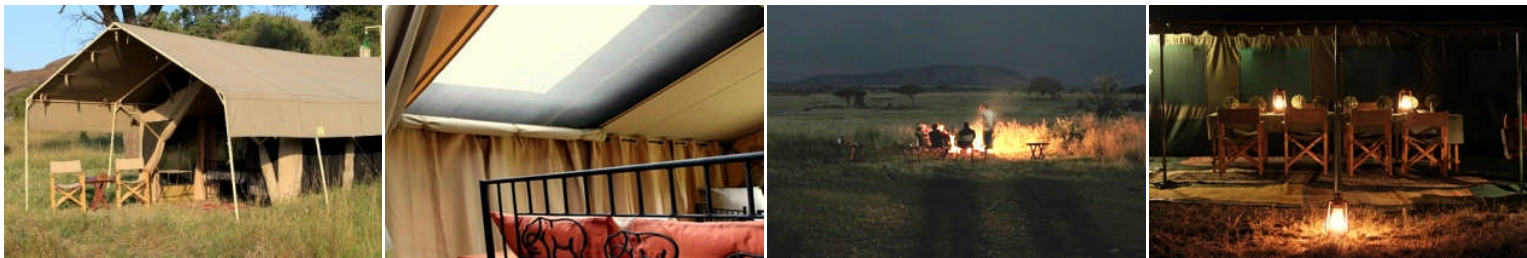
Intimate Places will, upon request, provide transfers to and from Kilimanjaro Airport and or Arusha Airport. Please ask for a quotation at the time of making your booking.

### 3. Payments:

A deposit of 50% is required upon confirmation of your booking. The balance or full payment must be made 45 days prior to your arrival at the Lodge.

### 4. Government Taxes:

Intimate Places reserves the right to increase the rates reflected in this document in the event that Government either institutes new taxes or increases existing taxes.



**If you are planning a Safari on the Tanzania Northern Circuit then please be sure to ask your Travel Agent about 'Intimate Places (private & exclusive) Camping.'**

Intimate Places, P. O. Box 2747, Arusha, Tanzania. Tel: (027) 255 3643 Fax: (027) 255 3885  
E-mail: [reservations@intimate-places.com](mailto:reservations@intimate-places.com) Skype & Facebook: Intimate Places Tanzania Website: [www.intimate-places.com](http://www.intimate-places.com)

*The essence of the Safari experience...*